

# Connecting the Entré to a Wireless Network

Connecting the Entré to a network is a great option, however, running a network cable (CAT 5) from the DSL/Cable router to the home theater room may be difficult. In this case we can use 802.11b wireless technology to network without having to run additional cables. The accessories needed are, a USB-to-Ethernet adapter (model - NetMate Link), which is distributed and sold through Kenwood USA Corporation, a DSL/Cable router, and two Wireless Access Points. The router should have enough ports to accommodate the number of computers in the system, including the Entré. The DSL or Cable modem will hookup into the WAN connection of the router. The first Wireless Access Point and other computers in the system will connect to the LAN ports of the router. The second Wireless Access Point will connect to the Entré, through the USB-to-Ethernet adapter. Refer to the connection diagram at the bottom of this page.

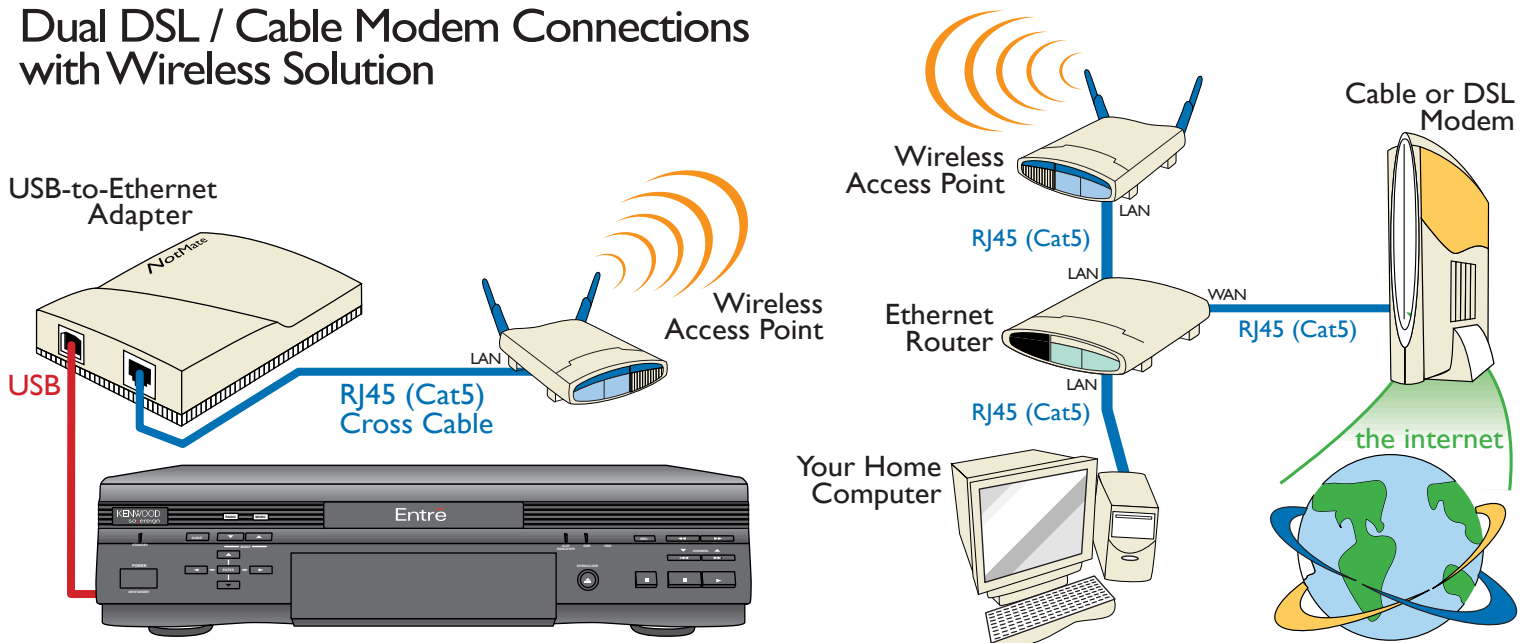
Setting up the Entré for a wireless network connection is very straightforward. Since most DSL/Cable routers use a dynamic IP addressing system, select "Dynamic" from the "Quick Start - IP Addressing" screen.

There are also some settings that need to be made on the two Wireless Access Points. Both Access Points must be set to "wireless bridge" operation. Refer to the operation manual of the Wireless Access Points for detailed instructions.

Attached to this document are detailed instructions on how to set up Linksys Wireless Access Points model WAP11 for "Bridged" operation.

**Important Note:** Make sure the RJ45 (CAT 5) network cable, from the Entré's USB-to-Ethernet adapter is a cross cable. A standard network cable will not work.

## Dual DSL / Cable Modem Connections with Wireless Solution



## Using the Access Point's Bridging Feature

### QUESTION

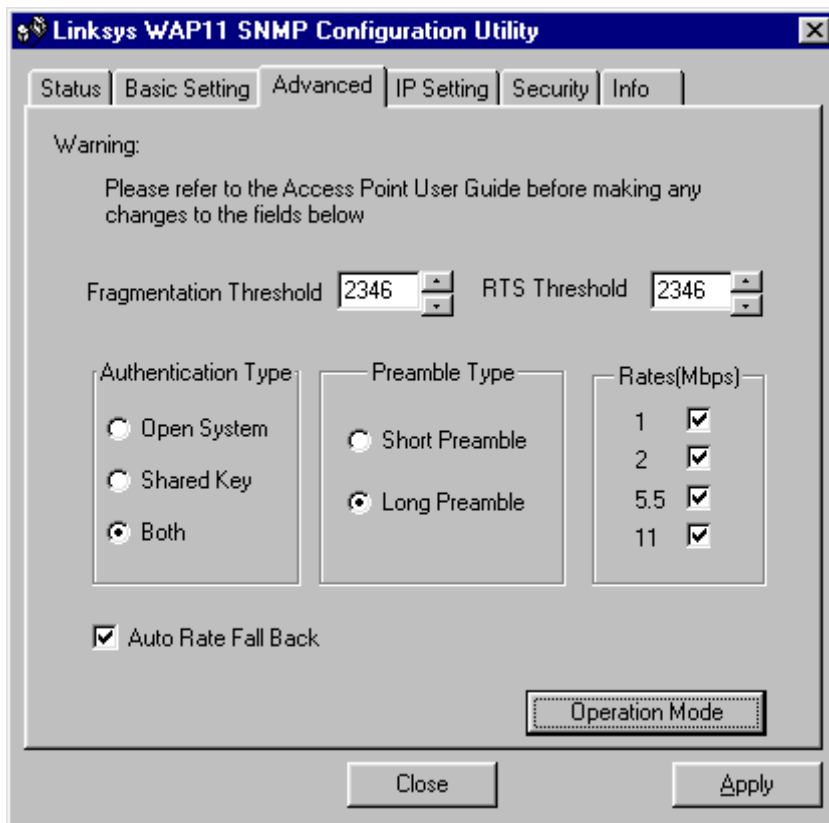
How do I use two or more Access Points to Bridge two wired LANs?

### ANSWER

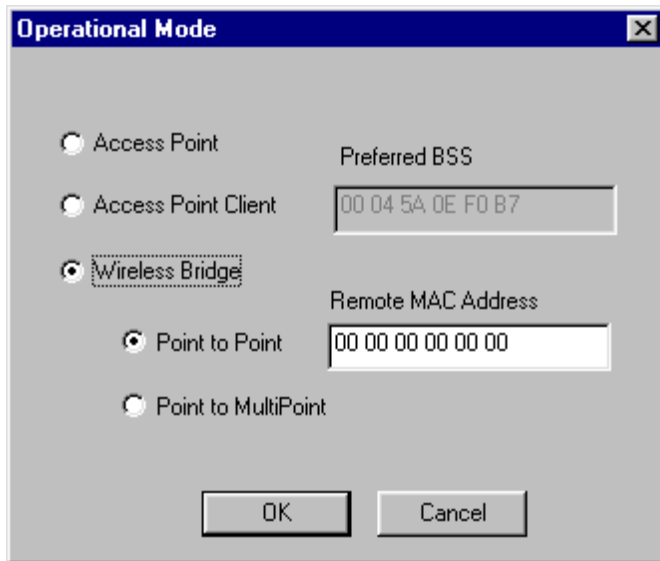
In order for Point-to-Point or Point-to-Multipoint Bridging to work, your Access Points will need to be installed with firmware versions 1.4f.8 or higher and must be set to "Bridge" mode.

To get to the Bridging options through the Access Point's **SNMP Configuration Utility**, do the following:

Once the Utility is opened, select the **Advanced** tab.



Click the **Operation Mode** button at the bottom of the window.



This will bring up the **Operational Mode** window. Within this window are all the modes in which the Access Point can communicate.

#### **Point to Point Bridging:**

To operate in **Point-to-Point Bridging mode** (for two Access Points only), place a mark in the radio buttons for **Wireless Bridge** and **Point to Point**. For the **Remote MAC Address**, input the Mac Address of the Access Point you wish to communicate with. The Remote Access Point will also need to be set up as a Wireless Bridge, with the other Access Point's Remote Mac Address.

#### **Point to MultiPoint Bridging:**

To operate in **Point-to-MultiPoint Bridging mode** (for three to 11 Access Points), place a mark in the radio buttons for **Wireless Bridge** and **Point to MultiPoint**. Only one of the Access Points will need to have this mode. For all other Bridged Access Points, select the **Point to Point** option and **enter the MAC Address of the Access Point set to Point to MultiPoint** into the **Remote MAC Address** field.